

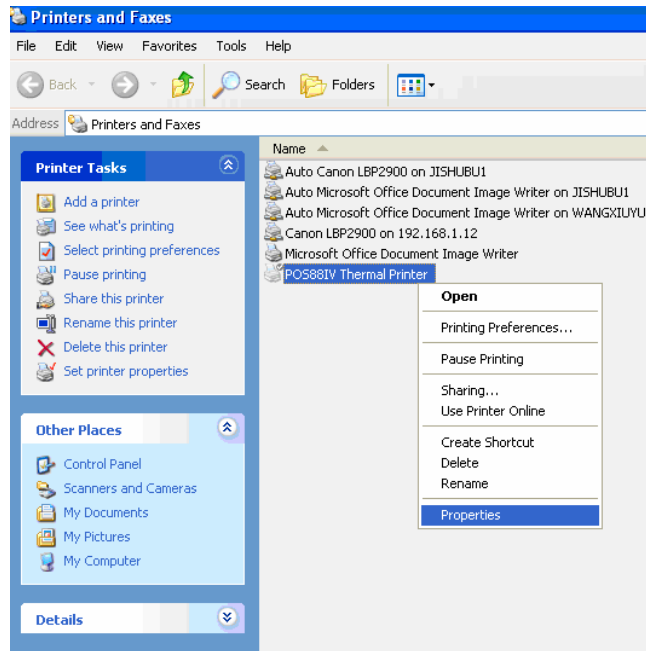
Printer with USB Interface Instructions

In Windows 2000, XP, 2003, VISTA OS

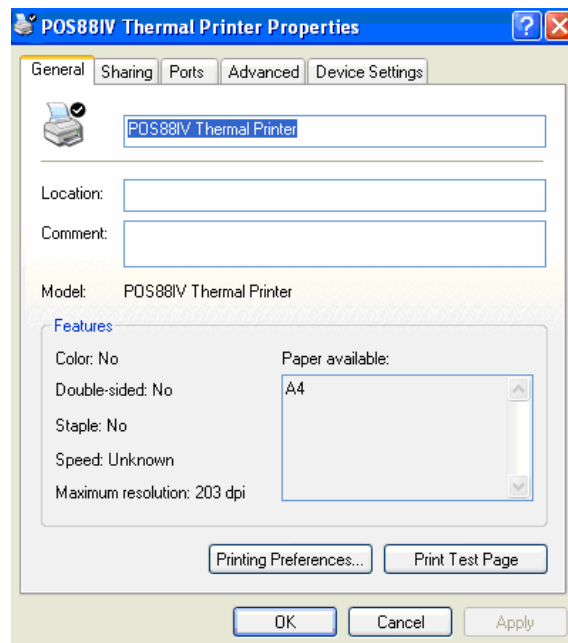
In Windows 2000, XP, 2003, VISTA OS, the installation method is same with other interface printers for the USB interface printer. The user only needs to select USB port after the printer is installed.

Take POS88IV as an example:

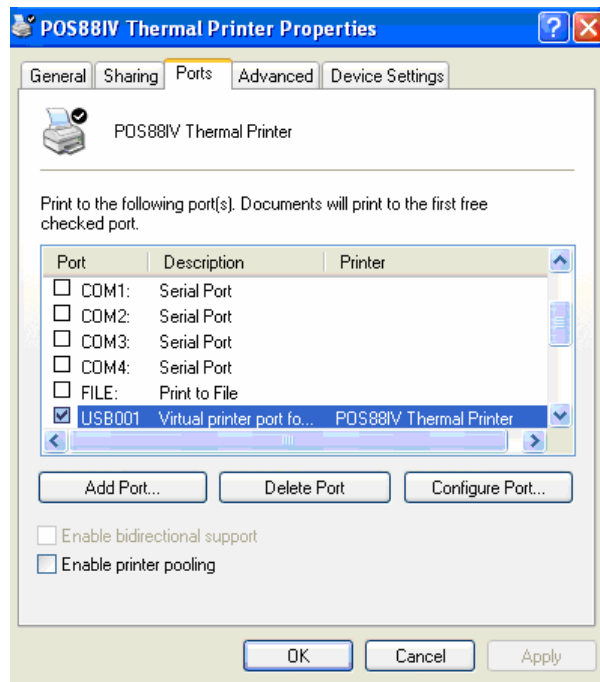
- 1、 Install POS88IV driver. Please refer to “Driver Installation User’s Manual” in the CD for details.
- 2、 Click POS88IV driver icon, it will show the following picture:



Click “Properties”, it will show as following:



Click “Port”, it will show as following:



Choose the “USB001”port then click “Apply”, the port selection is finished.

Then click “General” and “Print test page”, if the printer can print the test page, it means the printer has connected the host computer successfully.

In Win9x/winME OS

※When USB interface is a virtual LPT port:

USB Interface Driver Installation

1. Turn on the computer which will be connected to the USB interface printer, and confirm the USB port already start and normally work.
2. Connect the USB interface printer to the computer’s USB port, WINDOWS will detect a IEEE-1284 device, then run add new hardware wizard to help you set new device, click next to continue.
3. Select the drive program (file name is: PL2305_USB to Parallel), click next to continue. Select “Search for the latest driver for hardware”, then click next, choose installation from the floppy disk, then click ok.
4. WINDOWS will detect the installation information (parppl.inf) and show IEEE-1284 Controller device, click next to continue.
5. Click next to continue, make WINDOWS copy necessary documents to your hard disk.
6. When WINDOWS has installed the necessary software for new device USB-Parallel Bridge, click finish.

Please accord to the following steps to connect the printer to your computer's USB port:

1. Turn off the printer, please connect one end of the USB cable to the printer, then turn on the printer.
2. Turn on the computer, and connect the USB cable to the USB port.
3. If before this, you already install the printer driver, click start, printers and faxes. Then right click default printer and click properties. The installed printer properties dialog box was showed on the screen.
4. Click detail information tab and change the printer port to LPT2: (USB to Parallel Port).
5. If you don’t install printer, click start, printers and faxes, add a printer. Add printer wizard

will guide you how to install a new printer. Select the printer manufacturer and model from the list or from the CD-ROM the manufacturer provides.

6. When remind you which printer port do you use, please click LPT2: USB to Parallel Port.

7. When remind you printer has successfully installed, please run the print text page to check the print is normal or not. If normal means the printer connect correctly to computer and communication is normal.

※When it used as USB port

1. At the third step, use another Driver package(PL2305_USB to USB)when install driver, WINDOWS will detect and show the installation information (Usbprint.inf). After installation finished, you can see “USB Printing Support” in the system->device manager, equivalent to a USB device port.

2. Printing text, connect USB cable, turn on the printer, choose “USB001” port.

3. Run the print text page to check the print is normal or not. If normal means the printer connect correctly to computer and communication is normal.