



Windows Driver Manual

Rev. 1.1

HM-E200/HM-E300

Contents

1.Manual Information.....	1
2.Operating System(OS) Environment.....	1
3.Windows Driver Preparation.....	1
4.Windows Driver Installation.....	2
5.Detailed Windows Driver Setting.....	7
5.1 Printing Preferences.....	7
5.2 Other Settings.....	14
6.Uninstall Windows Driver.....	17
7.Specification.....	19

1.Manual Information

This Windows Driver Installation Manual provides information on installation and usage of the printer's Windows Driver according to PC operating system (OS).

We maintain ongoing efforts to enhance and upgrade the functions and quality of all our products. As follow, product specifications and/or user manual content may be changed without prior notice.

2.Operating System(OS) Environment

The following operating systems are supported for usage.

- Microsoft Windows 10 (32 bit/64 bit)
- Microsoft Windows 8 (32 bit/64 bit)
- Microsoft Windows 7 SPI (32 bit/64 bit)
- Microsoft Windows Vista SP2 (32 bit/64 bit)
- Microsoft Windows XP Professional SP3 (32 bit)

3.Windows Driver Preparation

The Windows Driver is included in the enclosed CD.

The installation file name is HPRT E200 E300 Printer Driver-V-X.X.X.X.exe
eg : HPRT E200 E300 Printer Driver-v-2.1.0.1.exe

4.Windows Driver Installation



Warning: Under different operating system, the screen has slight difference.

Please operate it according to the tips. Take HPRT HM-E200 (Windows 7) as example.

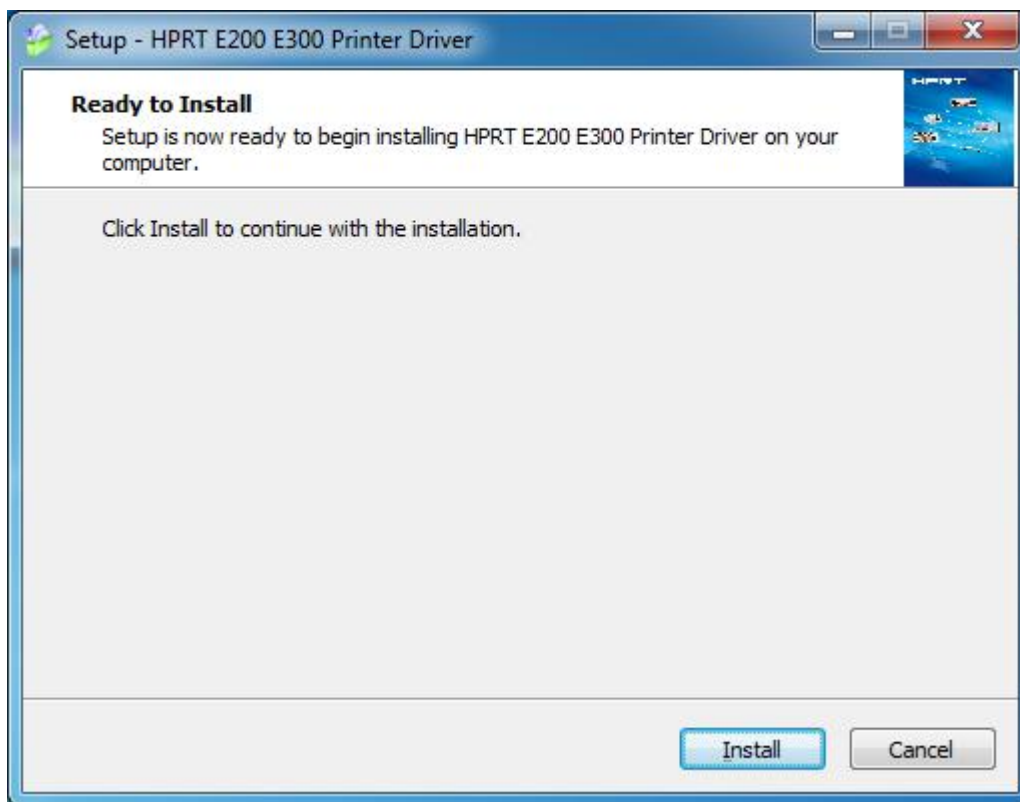



1.Double click Windows Driver.

2.Choose “English” and click “OK”.



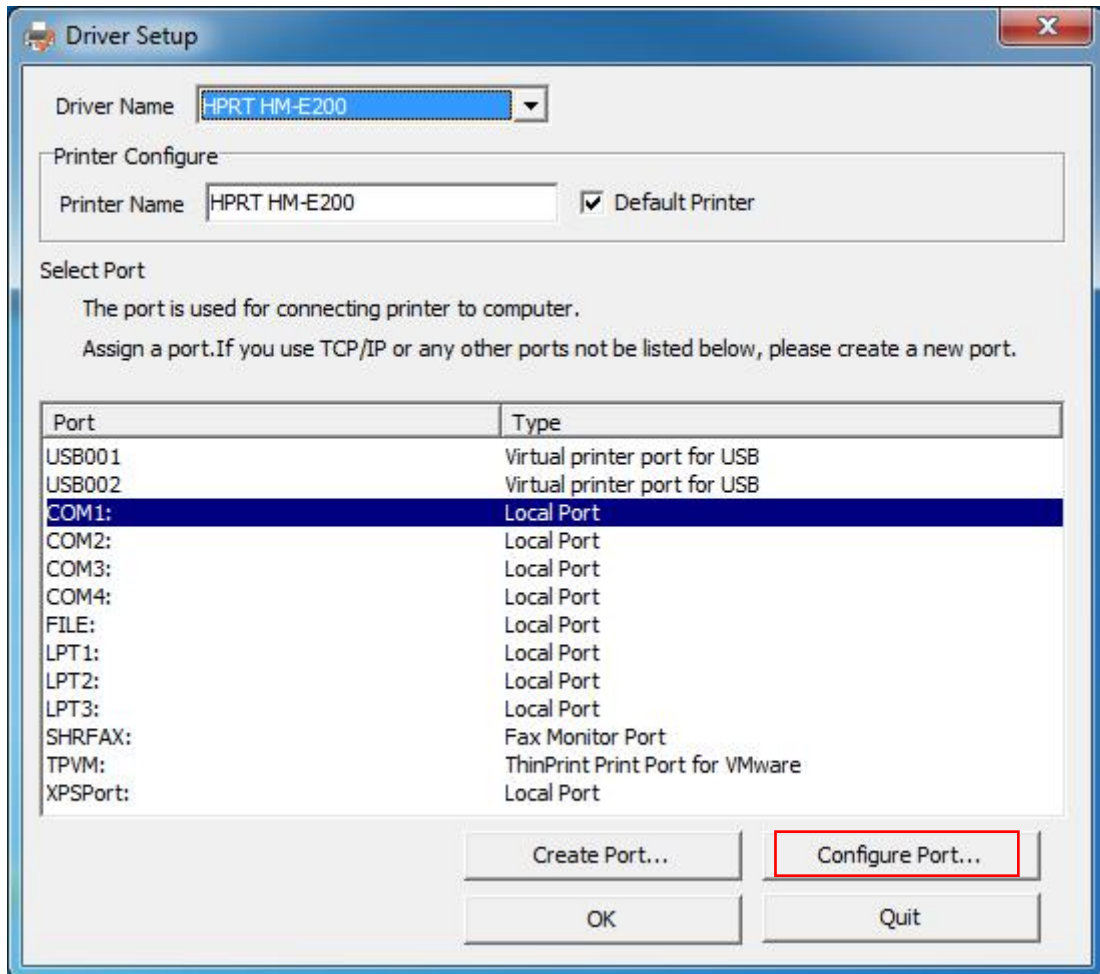
3. Click "Install".



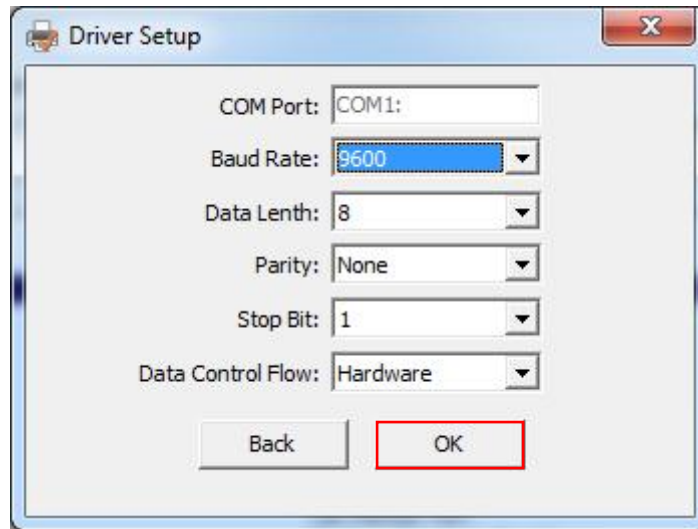
 **NOTE:** If printer is already connected with computer by USB port, it only needs to click "Install", then it will be installed automatically. Otherwise, proceed to the next step.

4. Choose the matched type and port. (USBxxx is for USB port, COMx is for serial port, LPTx is for parallel port).

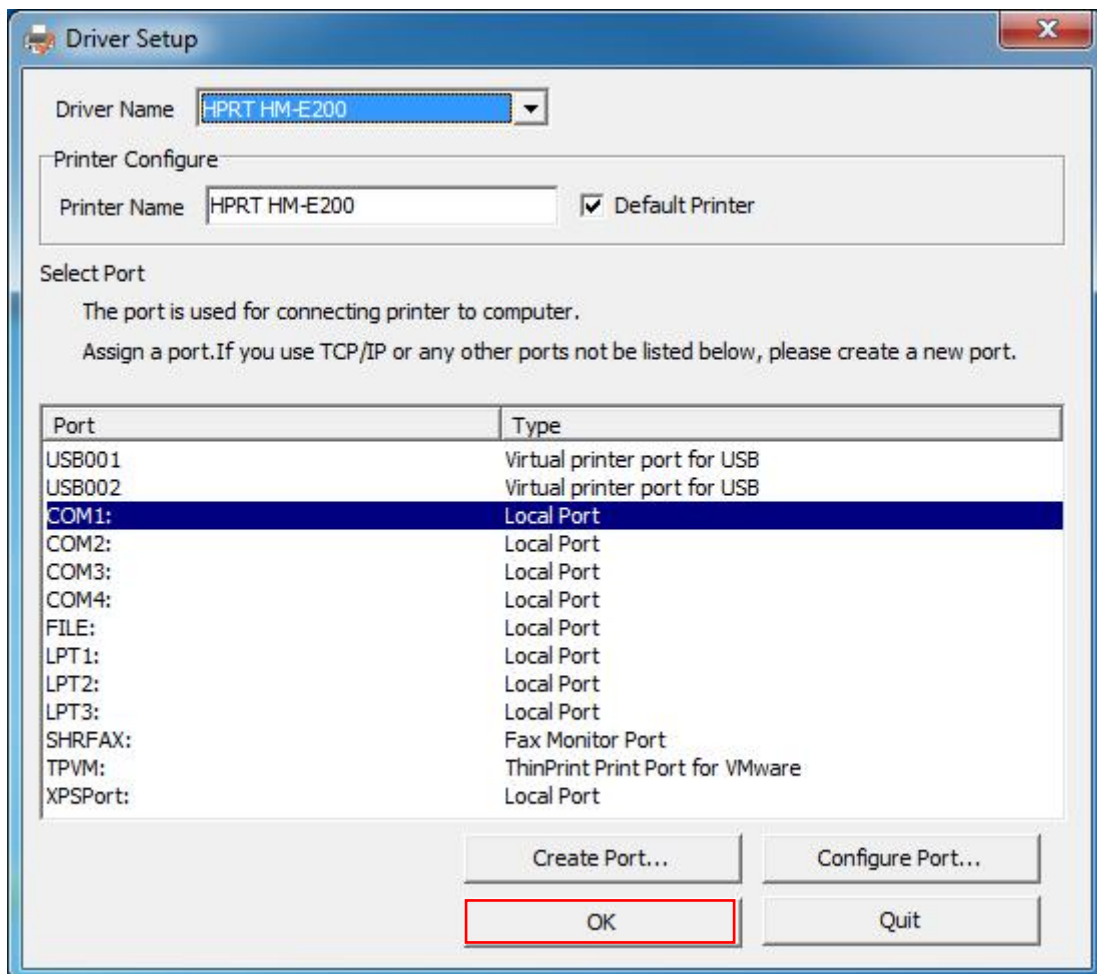
For example, choose "COM1" as port and choose "HPRT HM-E200". Click "Configure Port".



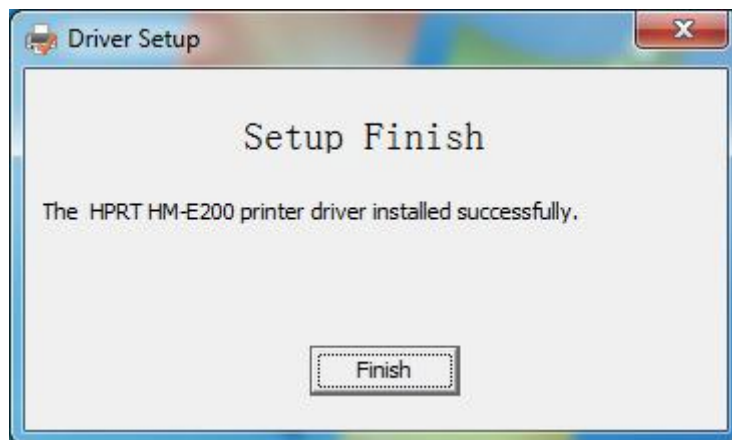
5. Complete the parameter setting.



6. Click "OK".




7. Click "Finish". HPRT HM-E200 printer driver installed successfully.



8. After installation, the icon will be found in "Start" → "Devices and Printers".

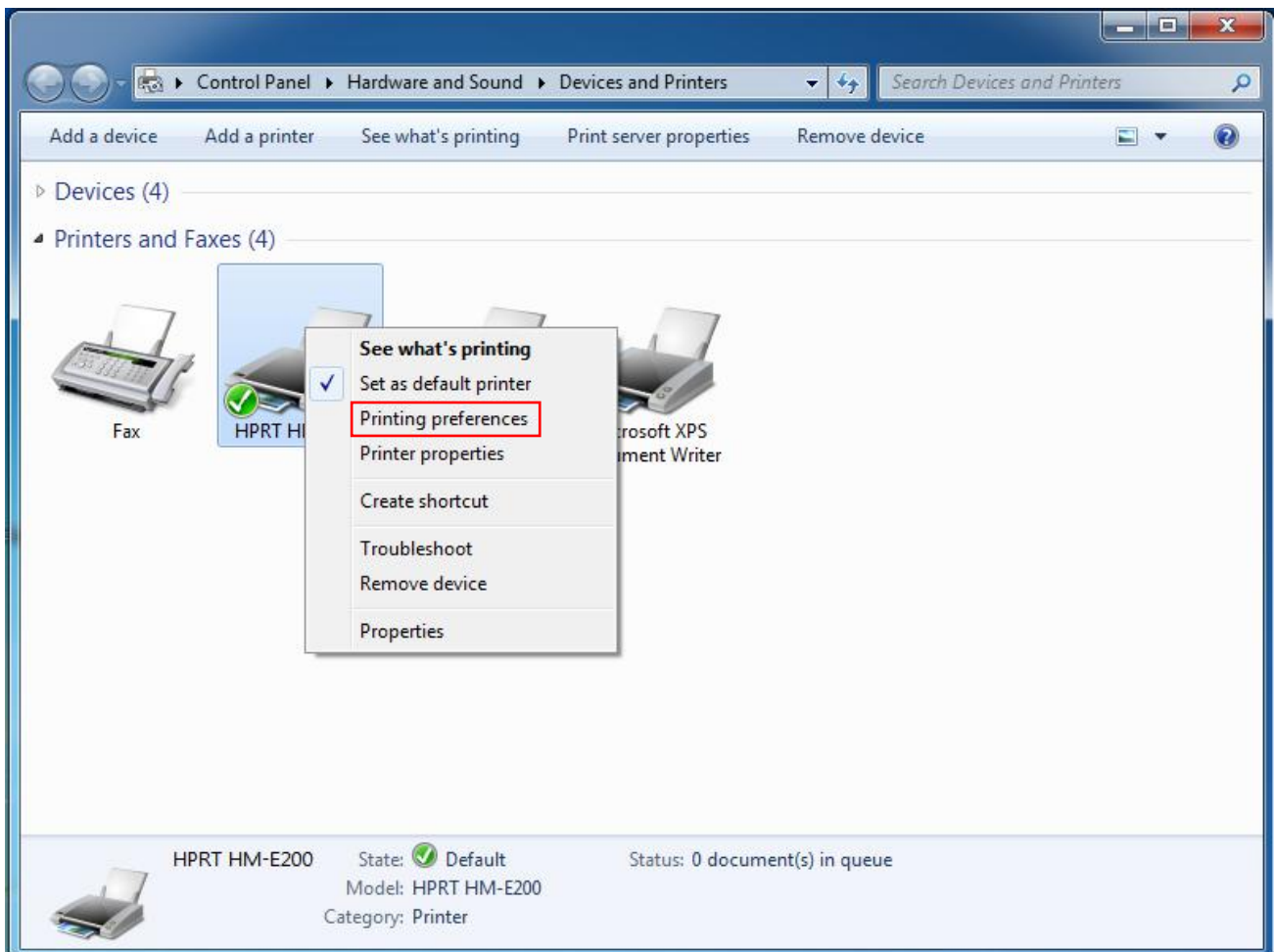


 **NOTE: If you already installed the driver (No matter what kind of port), when you connect the printer with computer, it will create a USB port automatically.**

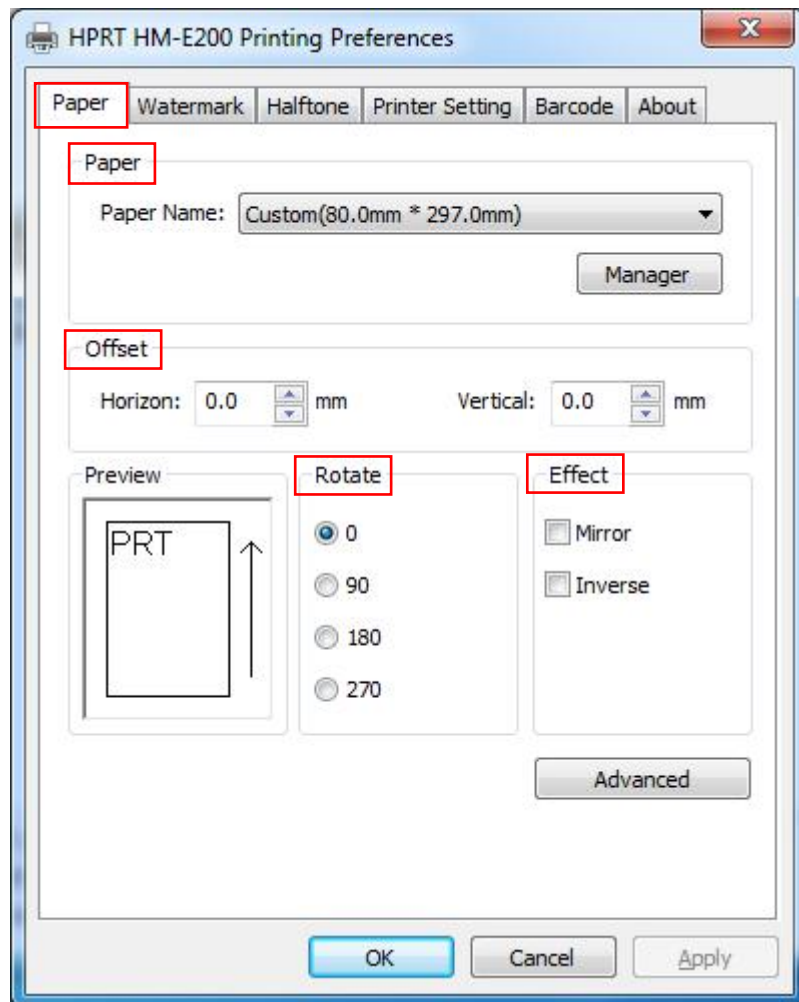
5.Detailed Windows Driver Setting

5.1 Printing Preferences

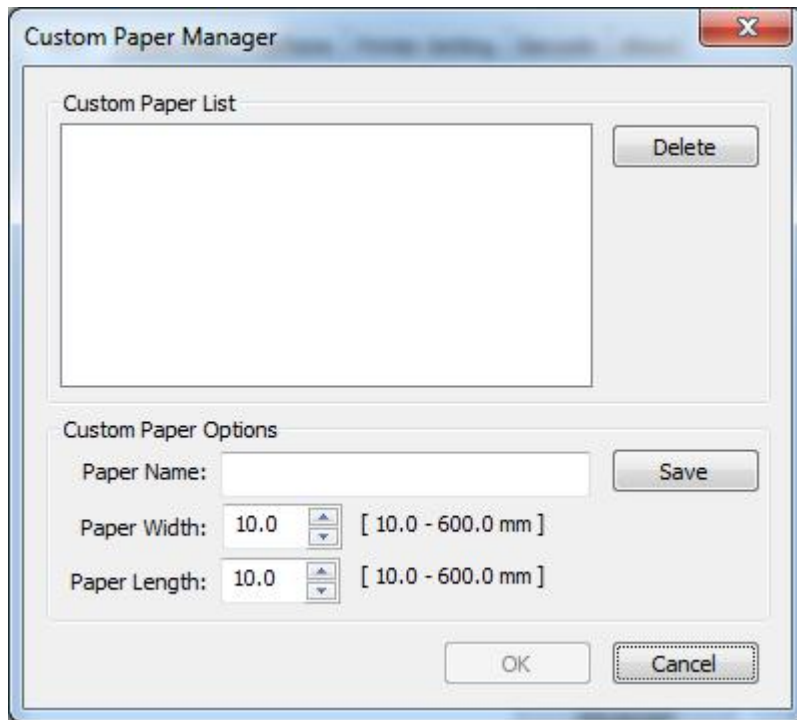
1.Click "Start"→"Devices and Printers". Right click "HPRT HM-E200" and choose "Printing preferences".



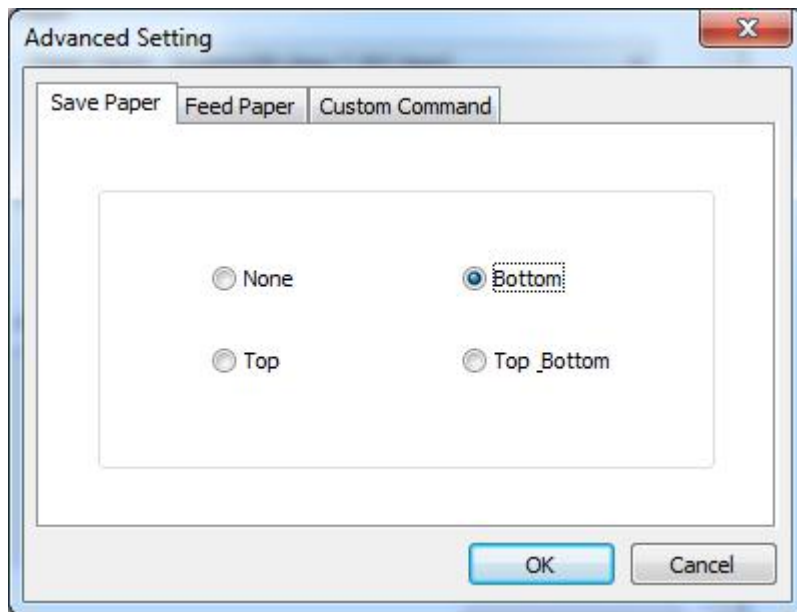
2. According to the different needs, choose “Paper”\“Offset”\“Rotate”\“Effect” in “Paper”.



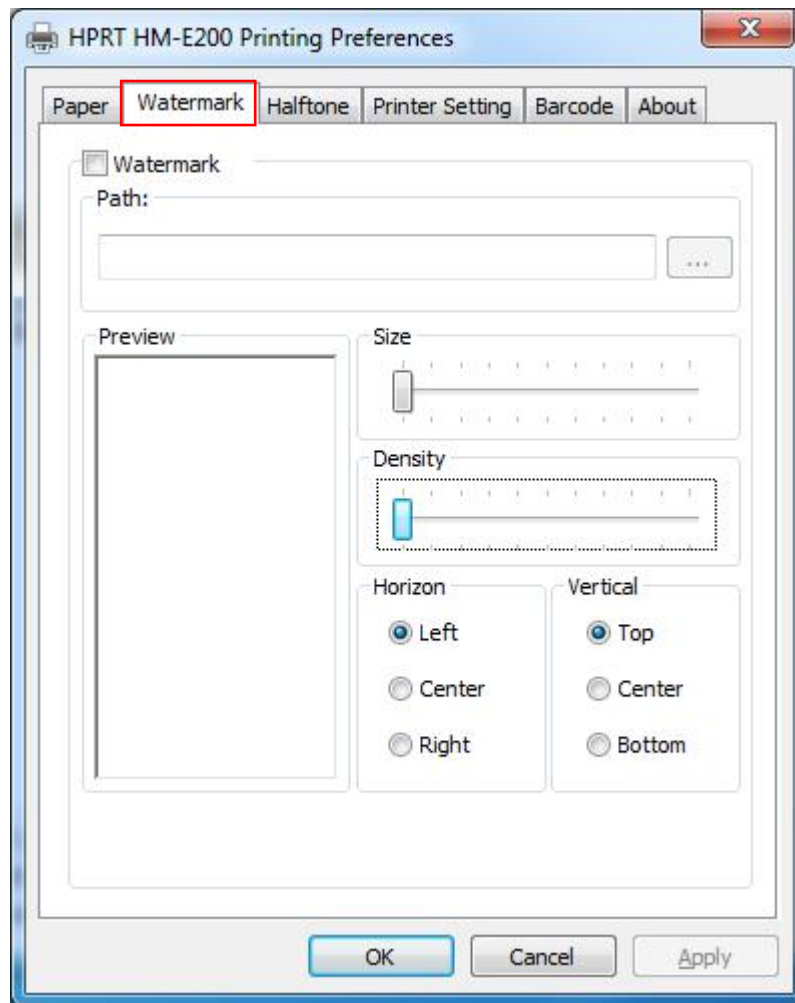
- Click on “Manager”, add or delete paper.



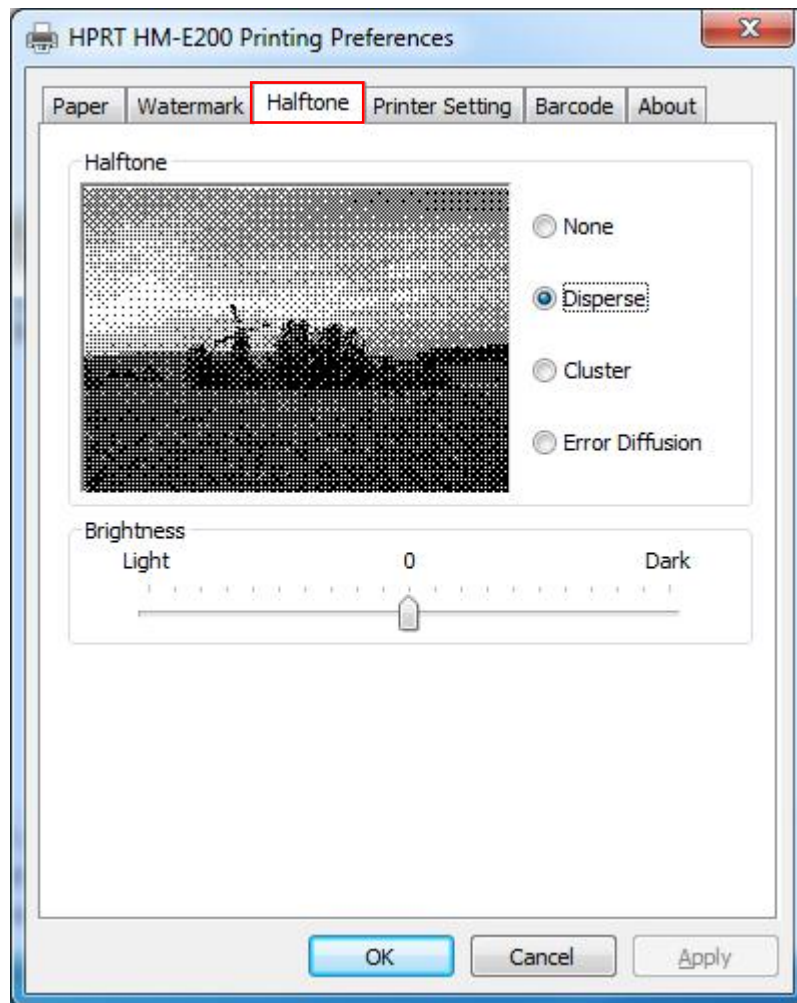
- Click on “Advanced” to set “Save Paper”, “Feed Paper”, “Custom Command”.



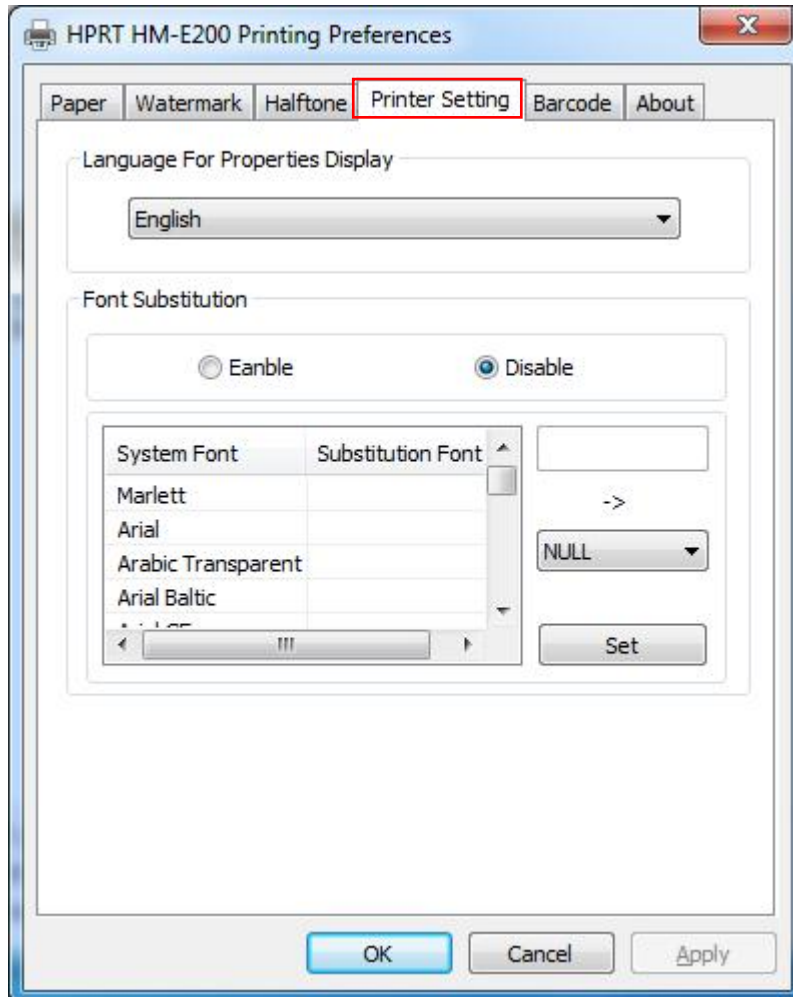
3. Click “Watermark”. Set watermark to print.



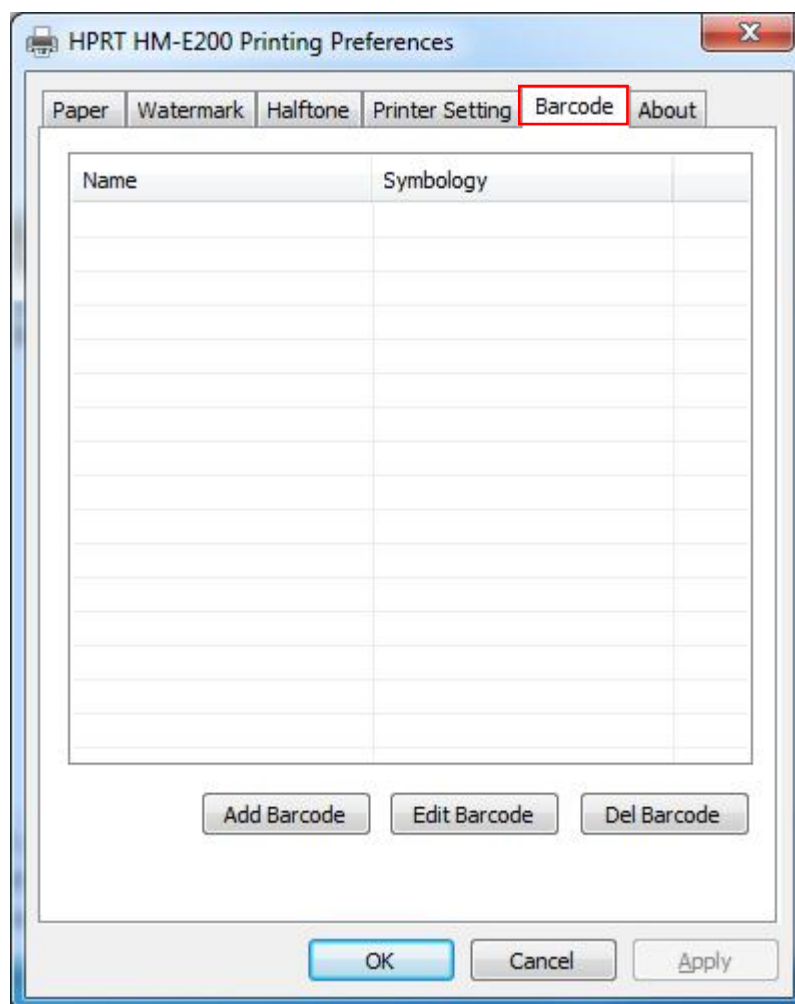
4. Click “Halftone” to set the halftone.



5. Click “Printer Setting” to set “Language For Properties Display” and “Font Substitution”.



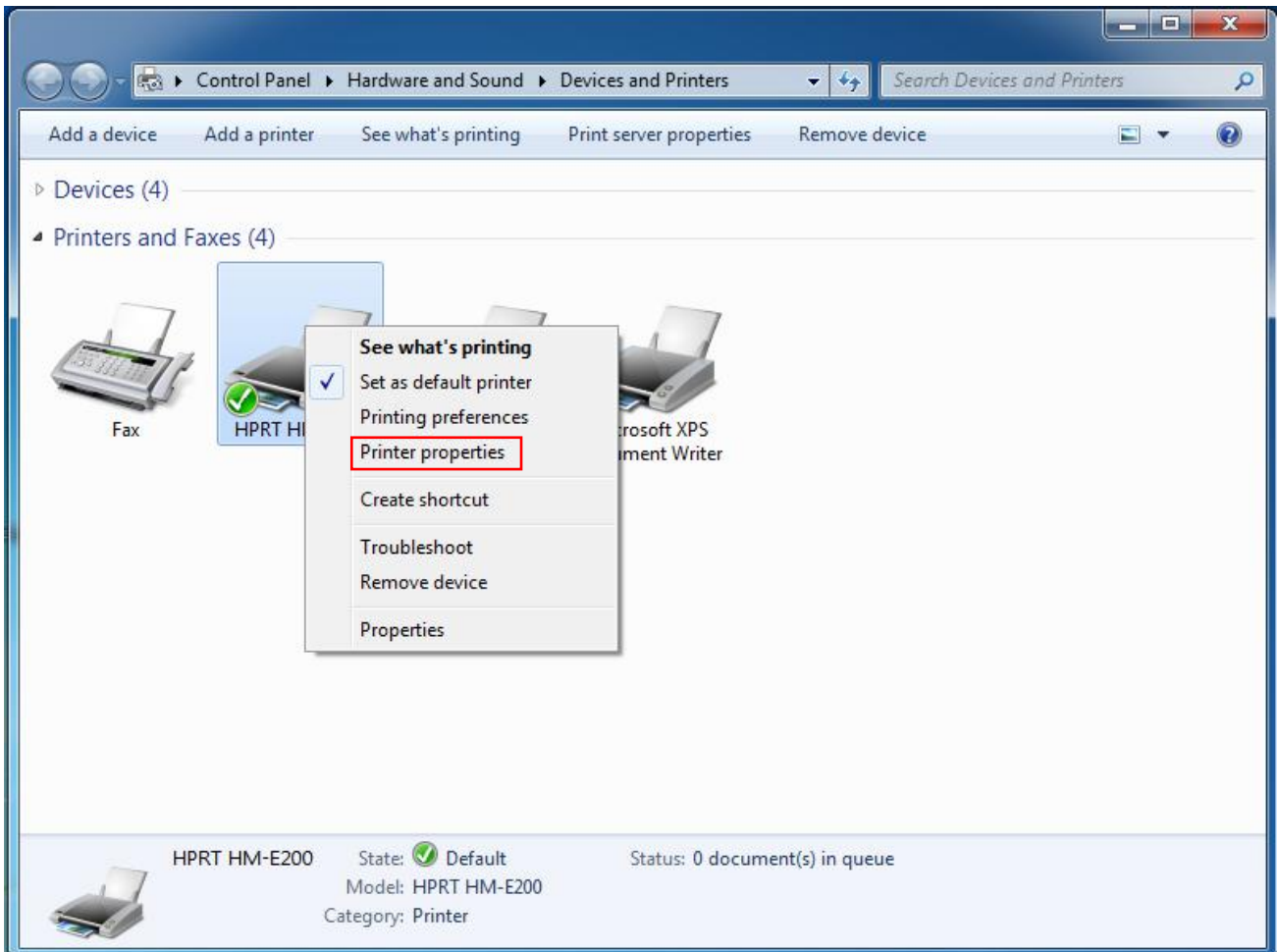
6. Click “Barcode”, and you can choose the “Add Barcode”/“Edit Barcode”/“Del Barcode” button to add/edit/delete barcode.



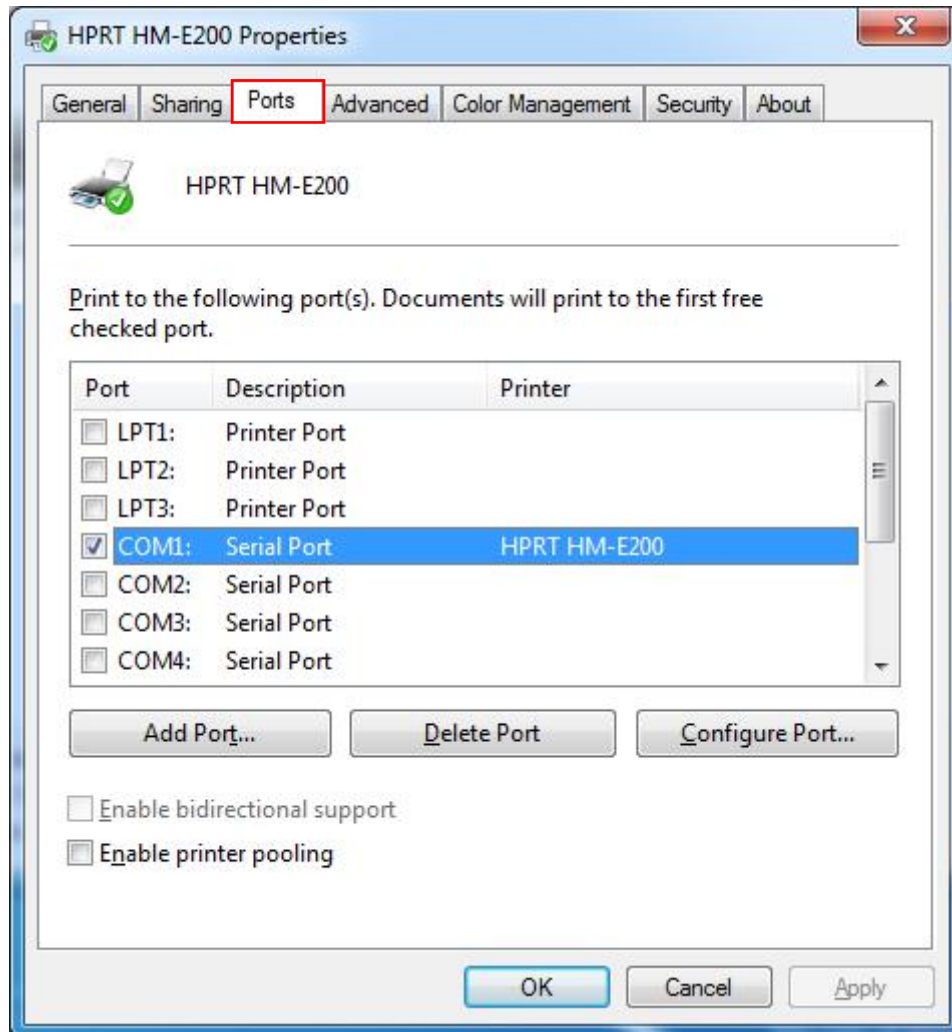
7. After all the setting, click “OK” to save it.

5.2 Other Settings

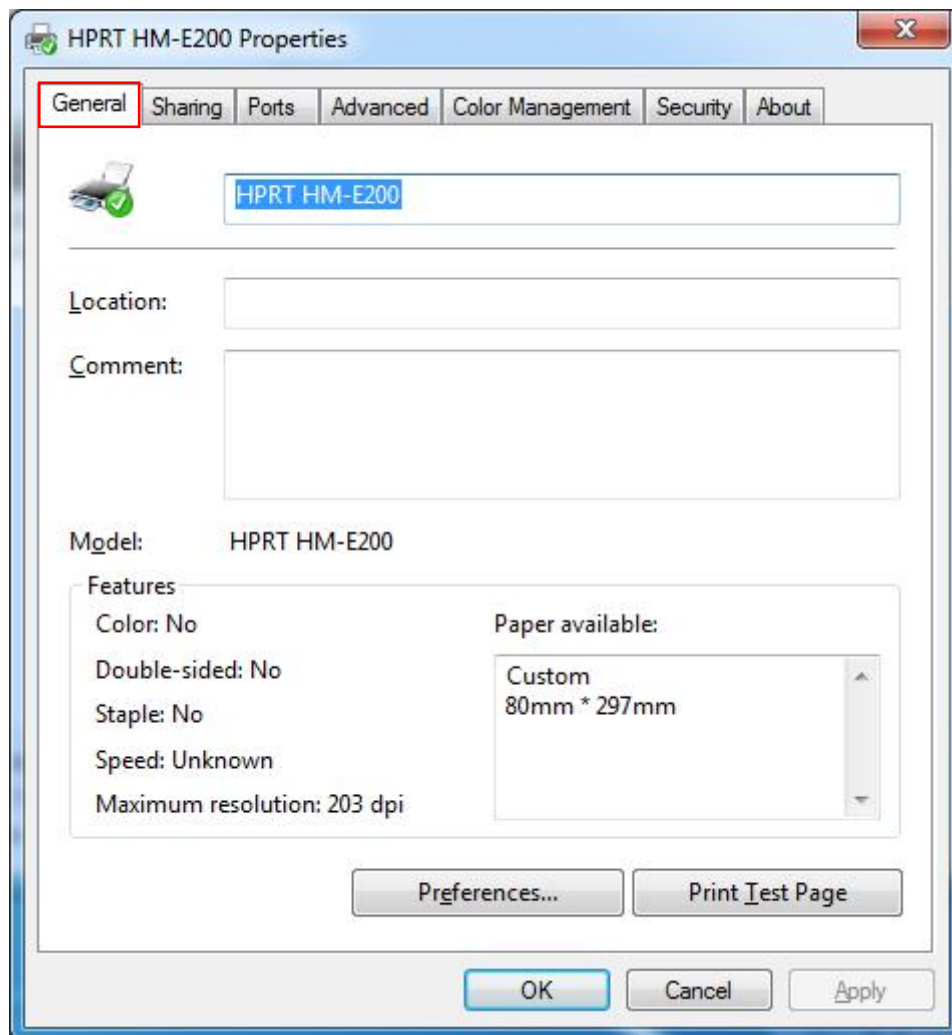
1. Click "Start" → "Devices and Printers". Right click "HPRT HM-E200" and choose "Printer properties".



2. Click "Ports" to set following items.



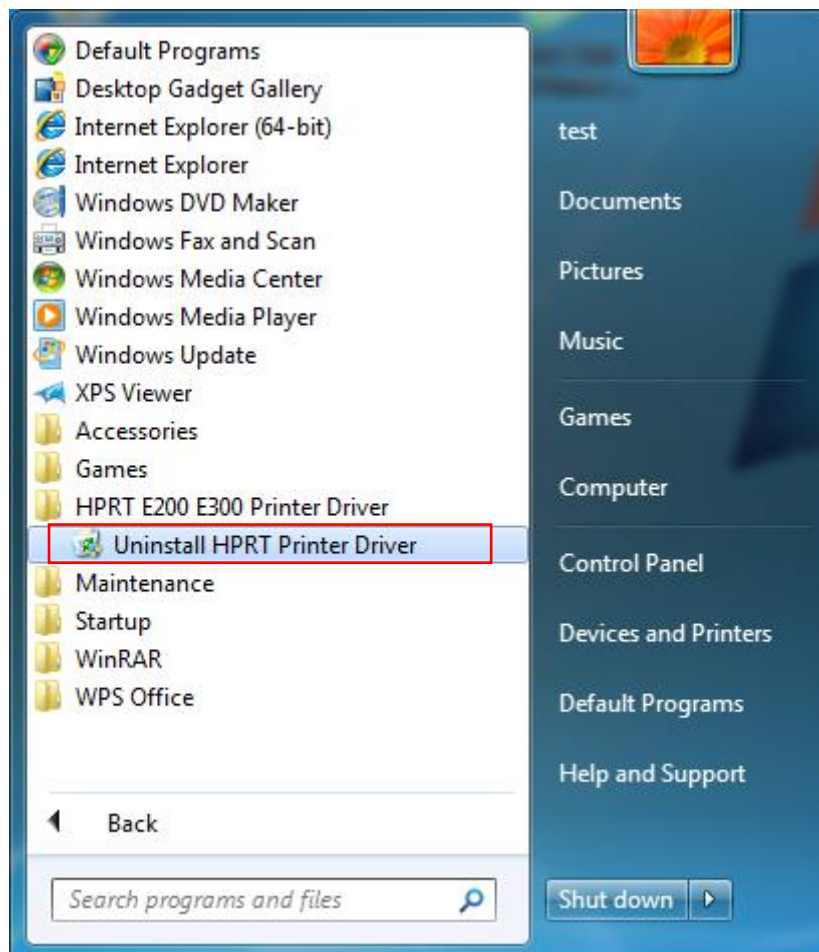
3. Click “General” → “Print Test Page” to check the status of the printer.



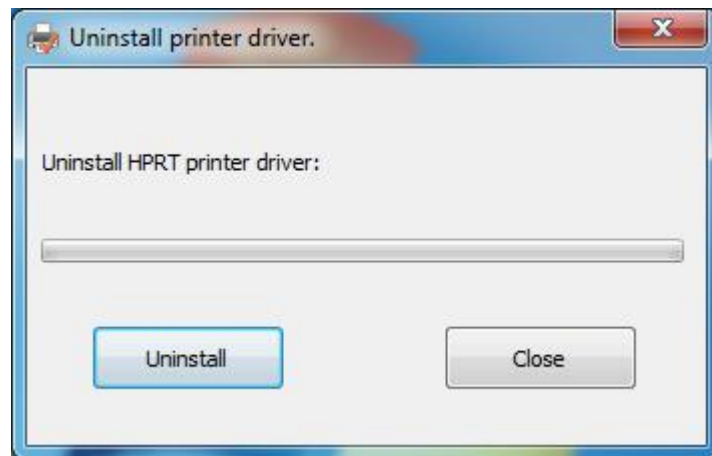
4. If the printer can print a test page correctly, then the driver is installed correctly.

6.Uninstall Windows Driver

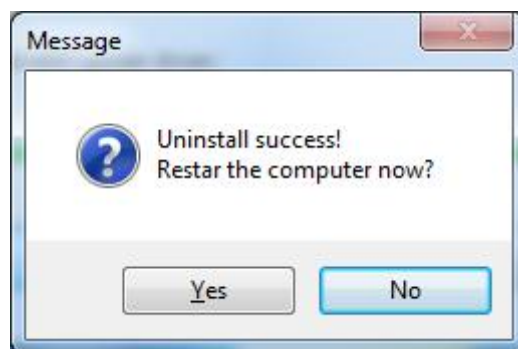
1.Click "Start"→"All Programs"→"HPRT E200 E300 Printer Driver" →"Uninstall HPRT Printer Driver".



2. Click "Uninstall".



3. Click "No". Then it is complete to uninstall.



7.Specification

Resolution:

HPRT HM-E200 : 203×203dpi

HPRT HM-E300 : 203×203dpi

Paper Size:

80×297mm